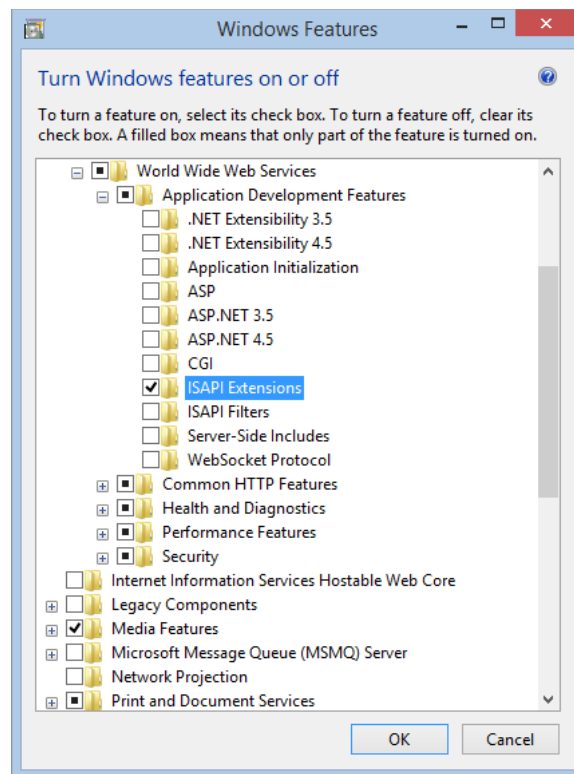


Installation details for jpeggertrigger.dll

Prerequisites

IIS:

Base IIS plus **ISAPI extensions** configured in **Turn Windows Features On/Off**



JpeggerTrigger.dll

Can be found in “\\seahags\aacrap\Software Releases”

Installation

1. Create the **JpeggerTrigger** folder under **c:\inetpub\wwwroot**.
2. In **Control Panel** → **Administrative Tools**, run “**Internet Information Services (IIS) Manager**”

3. Under the root node, double-click **Handler Mappings**
4. Right-click **ISAPI-dll** and select **Edit Feature Permissions**
5. Turn on the **Execute** permission
6. Click on the root node
7. Double-click on **ISAPI and CGI Restrictions**
8. At the right side of the screen, click **Add...**
9. Browse to jpeggertrigger.dll you installed in c:\inetpub\wwwroot\jpeggertrigger using the ... button
10. Check **Allow extension path to execute**
11. Click **OK**
12. Click **Application Pools**
13. Right-click **DefaultAppPool** and select **Advanced Settings...**
14. Near the top, change **Allow 32-bit Application** to **True** if it is not already
15. Click **OK**.
16. Test the setup by opening <http://127.0.0.1/jpeggertrigger/jpeggertrigger.dll> in a browser. If the following page is displayed, the installation is successful.

